

DH96 CPP

Digital unit used to control the maximum demand



Description

Features

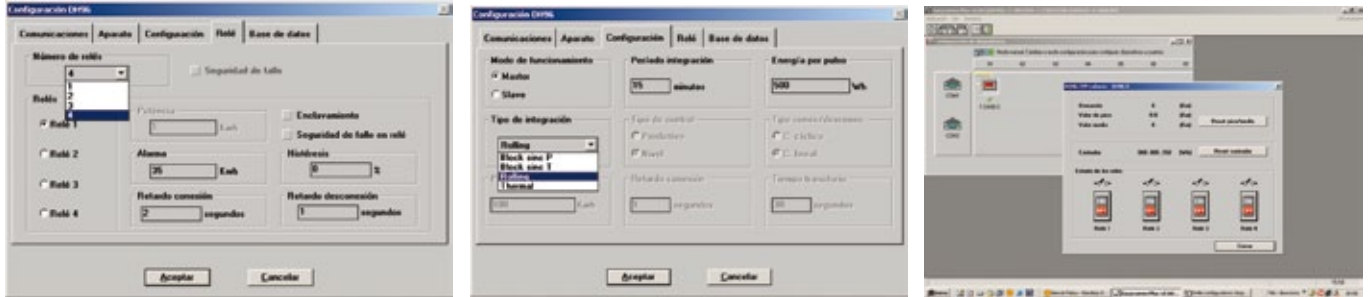
Power supply circuit	230 Vac (-15...+10%)
Consumption	4 V·A (without card), 7 V·A (with card)
Frequency	45..0.65 Hz
Measurement circuit	
Reading accuracy	0.5 % (± 1 dig)
Resolution	10 bits
Oversvoltage (permanent / during 10 s)	$1.2 U_n / 2 U_n$
Overload (permanent / during 10 s)	$1.2 I_n / 5 I_n$
Measurement margin	2 ...120 %
No. of conversions per cycle	32
Display	
Digits	4
Display refresh	< 1s
Decimal place	Programmable
Scale excess indicator	" - - - - "
Insulation	
Between the input, measurement and optional card output	
Test voltage	3 kV, 50 Hz, 1 min
Impulse test	4 kV (1.2 / 50 ms)
Output relays	
1 simple contact	
Isolation voltage	750 V contact-contact / 2 000 V Contact-Coil
Thermal current (I _{th})	5 A
Maximum operation power	750 V·A
Mechanical working life	2 x 10 ⁷ operations
Electrical working life	30 000 operations at 5 A and 250 V
Digital inputs	2 inputs, potential-free contacts (20 mA-24 Vdc)
Ambient conditions	
Storage temperature	- 40 ... +70 °C
Operating temperature	-10 ... +65 °C
Build features	
Box material	ABS V0, grey anthracite
Degree of protection	Box and terminals: IP 20 / Front panel: IP 54
Weight	550 g
Standards	
IEC 1010, IEC 348, IEC 664, VDE 0110, VDE 0435	

DH96 CPP

Digital unit used to control the maximum demand



Software



References

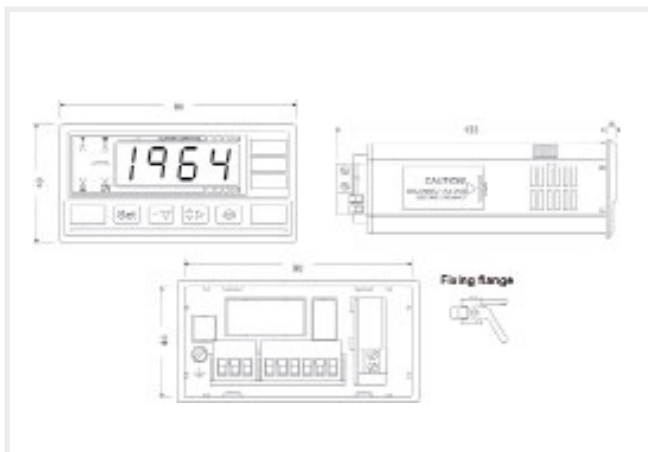
Communications	Type	Code
-	DH96 CPP	M60201
RS-485	DH96 CPP-RS	M60211



Coding table

M	6	X	X	X	X	0	0	X	X
Code						Internal Code			
Auxiliary power supply	Standard (230 V)					0			
	100 ... 120 V ac					1			
	380 ... 400 V ac					3			
	480 ... 500 V ac					4			
	18 ... 36 V dc					7			
	36 ... 72 V dc					8			
Current input	Standard (.../ 5 A)					0			
	... / 1 A					1			

Dimensions



Connections

