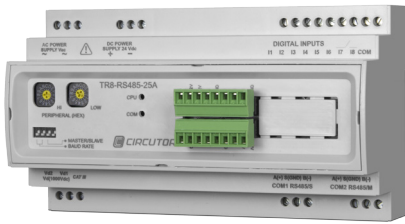
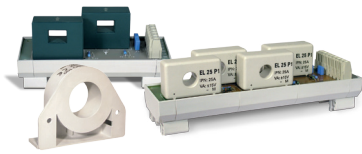


TR8

Multi-channel DC voltage and current analyzer for photovoltaic strings



Compatible with all modules of the **M/TR** transformer range.



Description

It is extremely difficult to certify that a photovoltaic plant is at its peak performance without having control over the primary power generation sources that would certify it. **TR8** has been designed specifically to control strings in photovoltaic plants; it checks the level of current generated in the various groups in real time and, therefore, checks the current flowing through the voltage and current sensors connected to the unit.

Applications

- Solar photovoltaic string monitoring application, used to measure up to 8 direct-current generation strings and a reference voltage of up to 1,000 V.

Technical features

Power circuit	Rated voltage	230 Vac / 24 Vdc power supply
	Tolerance	± 30% AC / ± 10% DC
	Frequency	50 Hz AC
	Consumption of the unit without transformers	8 mA / 1.84 VA AC 70 mA
	Consumption of the unit with 8 sensors (no-load)	32 mA / 7.36 VA AC 270 mA
	Consumption of the unit with 8 sensors (current)	32 mA / 7.36 VA AC 270 mA
	Accuracy	Linearity
Total		± 0.5% I_n
Resolution		± 0.075% I_n
Offset		0.075% I_n
Measurement margin		2,5 ... 100% I_n
Voltage		1%
Transformer accuracy	Linearity (excluding offset)	± 0.5%
	Offset 25 °C	± 10 mV at $I_n = 0$
	Offset drift / T	± 1 mV / °C
	Thermal drift of the gain	± 0.05% / °C
	Digital inputs	Number of inputs
Type		Optoisolated voltage-free (dry contact)
Maximum activation current		50 mA
Operating temperature		-35 °C...+ 65 °C
Mechanical features	Relative humidity	5%...95% (without condensation)
	Protection degree	IP 20
	Safety	Category III – 300 Vac (EN 61010)
Double-insulated electric shock protection class II		
Standards	CE certification	
	UL certification (see attached codes)	
	UR certification (Canada) (see attached codes)	

TR8

Multi-channel DC voltage and current analyzer for photovoltaic strings

References

Type	Code	Description	Current
TR8- RS-485-25	E80000	Measurement of up to eight 25 A channels Measurement of voltages of up to 1,000 V for the 25 A module	25 A
TR8- RS-485-25A-UL	E800000000700	Measurement of up to eight 25 A channels Measurement of voltages of up to 1,000 V for the 25 A module UL certification	25 A
TR8- RS-485-100/200	E80001	Measurement of voltages of up to 1,000 V, exclusive for 100 or 200 A transformers	acc. to trans. (100 or 200 A)
TR8- RS-485- 100/200A-UL	E800010000700	Measurement of voltages of up to 1,000 V, exclusive for 100 or 200 A transformers UL certification	acc. to trans. (100 or 200 A)

* Accessories **E80000**, **E800000000700**, **E80001** and **E800010000700** are complements listed in the **UL** file, so that together with the **TR8**s with **UL** certification they represent an assembly that can be fully certified

Type	Code	Description
M/TR-25A x2	E80010	Two-transformer module, up to 25 A
M/TR-25A x4	E80011	Four-transformer module, up to 25 A
M/TR-100A	E80012	Transformer, up to 100 A
M/TR-200A	E80013	Transformer, up to 200 A

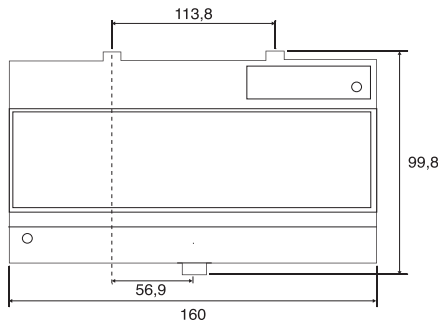
* Accessories **E80010**, **E80011**, **E80012** and **E80013** are complements listed in file **UL**, so that together with the **TR16** with **UL** certification they represent an assembly that can be fully certified.

Type	Code	Description
M/TR-100A - UR certification	E800120000500	Transformer, up to 100 A
M/TR-200A - UR certification	E800130000500	Transformer, up to 200 A

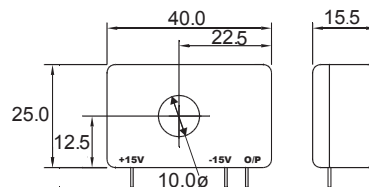
** Accessories **E800120000500** and **E800130000500** are complements with **UR** certification. They comply with the **UR** of the units of other manufacturers.

Dimensions

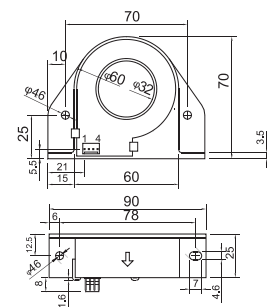
TR8



M/TR-25A

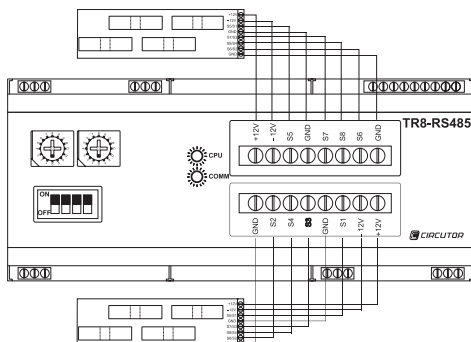


M/TR-100/200A



Connections

TR8-25A



TR8-100/200A

